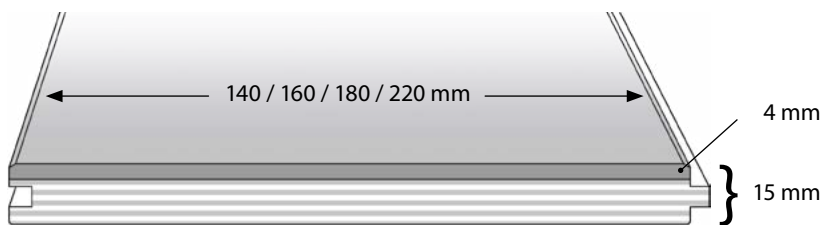


## HKS comfort 15/4 mm, oak

<b>Type/Construction</b>	1 strip plank in 2 layer construction, approx. 4 mm top layer oak on birch plywood (made in EU), WBP glued
<b>Dimensions</b>	15/4 x 140 / 160 / 180 / 220 mm
<b>Lengths</b>	random lengths 700 – 2.200 mm; system-packaging; 4 – 6 layers per bundle
<b>Packaging</b>	shrinking foil, sticker
<b>Profile</b>	all around tongue and groove, 4 sides beveled (GO4)
<b>Surfaces</b>	sanded or brushed; transparent UV oiled or oxidative invisible oiled
<b>Production</b>	according to EN 13489
<b>Grading*</b>	"According to the quality description of the manufacturer. Inside this grades it is allowed: markant <b>grade (ABCD)</b> : sound and filled knots, smaller cracks, filled cracks in the surface, rarely cracks in the filler, vivid structure, natural differences in colour, sapwood up to ¼ of the width, other wood typical characteristics. prime <b>grade (AB)</b> : sound knots up to 10 mm, filled knots up to 3 mm, minor hairline cracks, natural differences in colour."
<b>Installation</b>	glueing down on concrete or floating installation on Elastilon; always according to the instructions of the manufacturer (glue, Elastilon, etc.)
<b>Maintenance</b>	depending on use with suitable maintenance products
<b>Underfloor heating</b>	suitable on warm water system, no electric heating or cooling systems, surface temperature max. 29° C with equal heating, heat conductivity 0,17 W (m k); thermal resistance 0,088 m <sup>2</sup> K/W
<b>Fire resistance</b>	Dfl-s1
<b>Labelling</b>	CE
<b>Hints</b>	"Wooden floorings are a natural product, due to climate conditions joints can occur in winter and the planks can swell in summer. Therefore an expansion gap to the walls of min. 15 mm is necessary. According to the behaviour of the planks the customer must be advised."



\* According to the factory standard, 3% clause to EN standard, max. 3% of the complete delivery including the cutting differences can differ from the grading description. The material must be checked before installation, claims after the installation are impossible.